


Earlex[®]

Model SS200

Hands-Free Wallpaper Stripper



Please read these instructions carefully before use.

**Thank you for purchasing an Earlex Hands-Free Steam Wallpaper Stripper.
In order to obtain the best results, please read these instructions **BEFORE** commencing any work.**

Please also make a special note of the safety rules and
RETAIN FOR FUTURE REFERENCE.

Earlex Ltd. will not accept any responsibility for the use of this product,
if used for any purposes other than those detailed in this manual.

CONTENTS

Page 2	Safety Rules
Page 3	What's Included & Set Up
Page 4	Preparation & Operation <ul style="list-style-type: none">• Filling• Stripping
Page 5	Completion & Storage
Page 6	Safety Cut Out
	Other Uses & Trouble Shooting
Page 7	Guarantee
Page 8	Other Products in the Earlex Range

SAFETY RULES - PLEASE READ CAREFULLY

Please ensure that you test the plaster before commencing work. If the wallpaper stripper is left attached to the wall for long periods of time (over 10 seconds) it may loosen damaged or blown plaster.

SYMBOLS



CAUTION

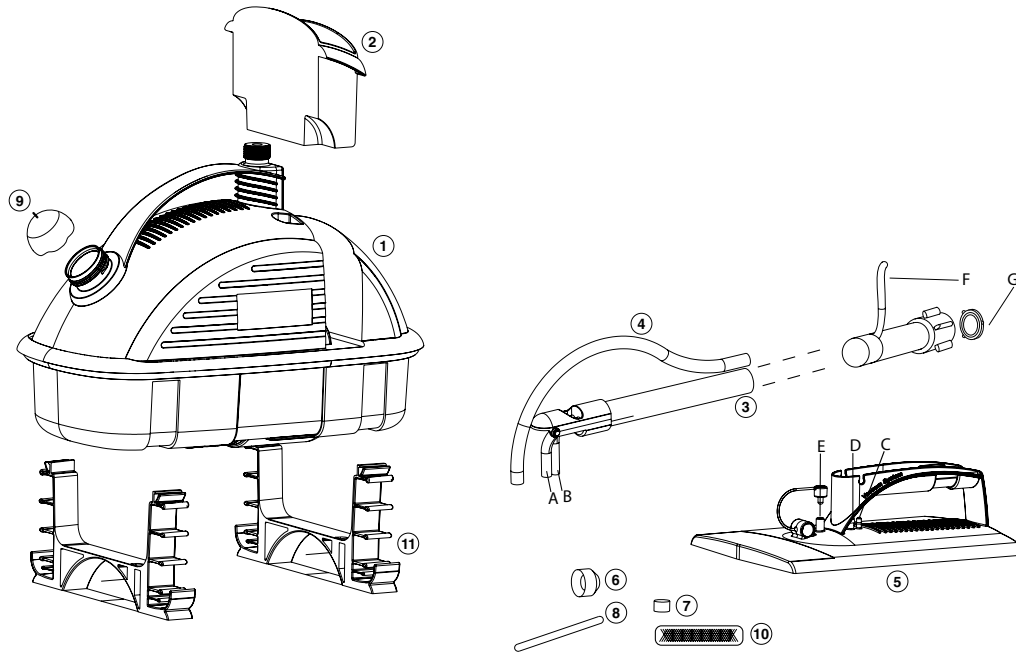


Warning: hot liquid or steam can burn. Danger of scalding. Steam may also condense into boiling droplets. Steam should not be directed towards electrical appliances. Danger of scalding appears on the cap as this symbol.

DO NOT:

- Leave unattended.
 - Leave steam plate attached to the wall for longer than 10 seconds. This is dependant on the type of wall covering being removed and condition of plaster. Always test on a small area first.
 - Modify pressure valve supplied.
 - Stand on the stripper.
 - Pull by the mains lead.
 - Point hose or steam plate at anyone.
 - Allow water or steam to enter light switches or sockets.
 - Strain or kink hose.
 - Block the top safety pressure relief valve; it is there for your protection.
 - Switch off the vacuum whilst the steam plate is attached to the wall/ceiling.
-
- Be careful of overhead water dripping down when working on the ceiling.
 - When removing Paper/Artex® from ceiling, ensure the steam plate is tilted away from face and body, and regularly check that excessive water is not being retained in the steam plate. When using on the ceiling, remember to empty the waste water tank if it becomes full.
 - Always use and store upright.
 - If using on the stairs, ensure boiler is in a safe and secure position.
 - The unit becomes hot in use. Do not touch. Only move by using the carry handle.
 - Always wear suitable protective clothing when operating the stripper.
 - A small amount of water will be expelled from a small hose in the base of the unit onto the surface below. This is to ensure the safe running of the wallpaper stripper and should not be blocked. Protect areas beneath the boiler, likely to be damaged by water or heat by placing the unit on a tray or plastic sheet.
 - The equipment must be unplugged after use and before cleaning.
 - This appliance is not intended for use by persons (including children) with reduced physical, sensory or mental capabilities, or lack of experience and knowledge, unless they have been given supervision or instruction concerning use of the appliance by a person responsible for their safety.
 - Children should be supervised to ensure they do not play with the appliance.
 - Never remove filler cap or detach hose whilst unit is operating.
 - Switch off and wait for 2 minutes before removing filler cap to refill boiler.
 - Allow to cool completely before emptying boiler.
 - Use only standard tap water. Never use detergents or chemicals.
 - Extreme care must be taken if the unit is used in bathrooms. Always be aware of danger of electrocution from stored water in baths or sinks.
 - It is recommended that an RCD (residual current device) rated at 30mA is fitted into the mains supply socket for added protection against electric shock.
 - Keep equipment away from children and pets.
 - Use only genuine Earlex replacement parts.

WHATS INCLUDED...



PARTS LIST

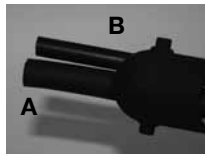
- | | | |
|---|---|---|
| 1 Boiler | 6 Vacuum Seal (Spare Part - HF0061) | A Steam Tube |
| 2 Ceiling Waste Water Collection Tank (Spare Part - HF0021) | 7 Foam Filter (Spare Part - HF0063) | B Steam Plate Vacuum Tube (Spare Part - HF0086) |
| 3 Main Steam Hose (Spare Part - HF0058) | 8 Spatula | C Vacuum Inlet |
| 4 Ceiling Waste Water Drainage Hose | 9 Filler Cap (Spare Part - F13) | D Steam Outlet |
| 5 Steam plate (Spare Part - HF0026) | 10 Velcro Straps x 4 | E Waste Water Outlet Cover |
| | 11 Hose & Cable Storage Clips (Spare Part - HF0016) | F Boiler Vacuum Tube (Spare Part - HF0092) |
| | | G Steam Hose Seal (Spare Part - HF0094) |

SET UP

Please follow these simple instructions to fully assemble your hands-free wallpaper stripper **BEFORE** use.

1. Remove hoses and Velcro straps from plastic bags.

2. The main hose has two small black tubes coming out of one end. The larger tube (A) is for steam and the smaller tube (B) is for the vacuum. Attach these tubes to the steam plate by inserting through the handle hole. Attach the larger tube (A) to the steam outlet (D), and the smaller tube (B) to the vacuum inlet (C).



3. Once the tubes are connected, clip the hose into the steam plate handle as shown.

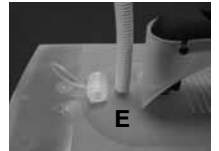


4. Use Velcro straps to secure both hoses together.



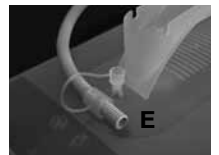
5. CEILING SET UP

Connect the Ceiling Waste Water Drainage Hose to the Waste Water Outlet on the steam plate. Store the Waste Water Outlet Cover (E) in the tube on the steam plate for security.



6. WALL SET UP

Store the Ceiling Waste Water Drainage Hose in the tube on the steam plate for security. Ensure the Waste Water Outlet Cover is pushed into the Waste Water Outlet to prevent steam escaping when using the unit on walls.



7. Screw on the other end of the main hose to the boiler, and tighten by hand.



8. Connect the rubber Boiler Vacuum Tube (F) from the the vacuum outlet of the main hose to the vacuum port on top of the unit.



9. Place the end of the ceiling waste water hose into the waste water collection tank.

10. The unit is now ready to operate. Please see operation instructions below.

NB: The ceiling waste water hose is only required when working on ceilings and is not needed for work on walls. It can be secured to the main hose using the Velcro straps and stored in the tube when not in use, or left off the assembly of the product.

PREPARATION

If the plaster underneath the Paper or Artex is in a poor state of repair, care must be taken. If the plaster is old or cracked, the steam may penetrate, causing the plaster to “blister” or fall out. Check the plaster first and do not continue if this is unsound.

1. In order to achieve the fastest result it is best to gently score the wallpaper to be removed before operating the stripper.
2. If you have heavily embossed paper or painted paper this is essential.
3. Perforate the paper using a perforator tool, or alternatively score the paper in a criss-cross pattern approximately 6 inches apart with the edge of a wallscaper. A perforator tool is extremely useful for large surface areas and is available to buy through the online shop www.earlex.com. For further availability please call our Customer Care Line on 01483 454666 quoting part number PPF1, or email enquiries@earlex.co.uk
4. As with all decorating, care should be taken to protect carpets and furniture with covers.



OPERATION

DANGER FROM STEAM The unit has been designed for safe and fast removal of wallpaper but you must be aware at all times that steam is being produced and it can burn.

FILLING

WARNING: BEWARE OF HOT WATER DISCHARGE PRIOR TO STEAM EMISSION.

DO NOT:

- Over-tighten the filler cap.
- Overfill the unit by tilting the unit as hot water may be forced up the hose.
- Leave unattended.

1. Remove filler cap on top of the boiler and fill to the top with clean water, preferably hot. Do not tilt the unit when filling. If refilling the unit, ensure that it is disconnected from the main power.
2. If filled to the maximum (point of overflow) 5 litres, the stripper will operate for approximately 78 minutes before requiring refilling. It will take longer to commence steaming on a maximum fill, taking up to 15 minutes.
3. Always replace the filler cap after filling. The cap only needs to be hand tight.
4. The capacity of 5 litres (9 pints) provides approximately 78 mins steaming time before the safety cut-out operates. For a shorter steaming time use less water.
5. Connect mains lead to the power socket and switch on the steam switch only, indicated by this symbol. It will take between 8 - 15 minutes (approx.) for the unit to start producing steam depending on the temperature and the quantity of water used.



WARNING - Hot water discharge before steam is produced.

6. Once steam is produced at the steam plate, you will need to switch the vacuum pump on, indicated by this symbol. You are then ready to commence operation. Make sure that the motor air inlet on the base of the unit is not blocked by the dustsheet as this will cause the motor to overheat. The motor is fitted with a re-setting thermal cut-out. If thermal cut-out is activated, please allow 15 minutes for the unit to reset.



STRIPPING

Remember to check a small area first.

The foam filter (part HF0063) should be checked for debris and cleaned on a regular basis. DO NOT try to remove this while the unit is still steaming. Please allow the unit to cool before cleaning the filter.

WALLS

Please keep the hose clipped into the steam plate handle when working on walls, as shown.

1. If you are right handed, hold the steam plate in your left hand and place flat against the wall where you wish to commence removing the paper.
2. Leave the plate against the wall for approximately 10 seconds. The length of time will depend on the type of wall covering you are removing.
3. If you are left handed you may find it easier to operate with the other hand.
4. Move the steam plate to the section immediately next to where you have just been working and use a wallscaper to remove the section that has just been steamed.
5. By working in this way you should be able to remove paper continuously.
6. Operate the steamer until steam is no longer produced (there is a safety cut out when water level gets too low), switch off the vacuum pump and boiler switch, and then leave for a minimum of 2 minutes before refilling. Allow to cool completely before packing away.



CEILINGS

Please note: While using the steam plate on the ceiling the unit will expel a small amount of water out of the base of the unit from the vacuum pump exhaust hose onto the surface below. Ensure that all floor surfaces are protected by dust sheets or plastic.

Please ensure that the hose is unclipped from the steam plate handle when working on the ceiling, as shown. This will enable the hose to hang vertically and make sure the steam plate remains in position.

1. If you are right handed, hold the steam plate in your left hand and place flat against the ceiling where you wish to commence removing the Artex®/paper.
2. Leave the plate on the ceiling for a maximum of 10 seconds. The length of time will depend on the type of covering you are removing.
3. If you are left handed you may find it easier to operate with the other hand.
4. Move the steam plate to the section immediately next to where you have just been working and use a wallscraper to remove the section that has just been steamed.
5. Empty the ceiling waste water tank when it starts to become full. It holds a total of 500ml of water and in 78 minutes should only require emptying once if a full tank is used.
6. By working in this way you should be able to remove Artex®/paper continuously.
7. You may have to leave the plate on the ceiling for longer periods or re-steam if not completely removed.
8. Operate the steamer until steam is no longer produced (there is a safety cut-out when water level gets too low), switch off the vacuum and leave for a minimum of 2 minutes before refilling. Allow to cool completely before packing away.

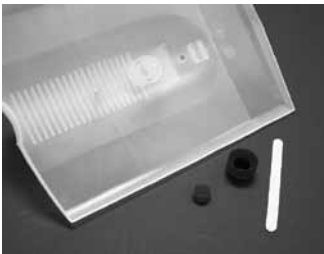


COMPLETION & STORAGE

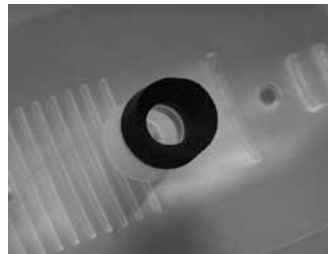
1. Switch off steam and vacuum pump switches, and unplug the unit.
2. Allow the unit to cool completely and then empty the unit and waste water collection tank of any remaining water. Never leave water in the unit whilst being stored.
3. Once the unit has cooled, wind the cable around the base of the feet on the unit and then wind the hose around the leg clips. Slot the steam plate into the side slots on the feet.

HOW TO ASSEMBLE THE SPARE VACUUM CUP AND STEAM PLATE FILTER

Insert the vacuum seal (6) into the steam plate as shown.



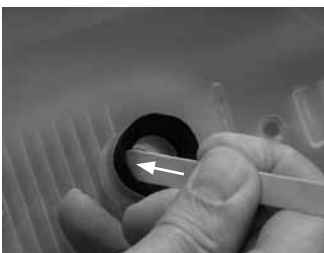
1.1



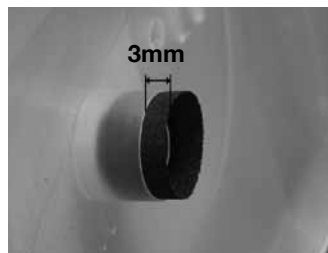
1.2



1.3

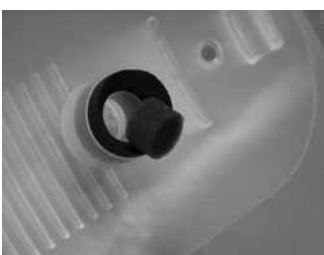


1.4

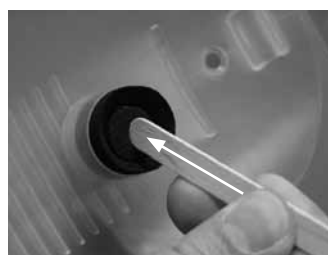


1.5

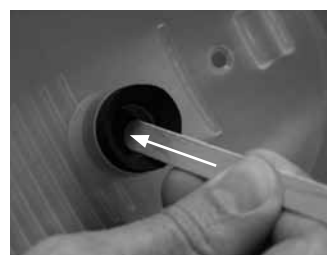
Insert the foam pump filter (7) as shown.



2.1



2.2



2.3



2.4

SAFETY CUT-OUT

If the unit should cut out when being used, this is because the safety thermal cut-out has operated. Wait 2 minutes and refill with water. The cut-out will automatically reset and you should have to wait between eight and fifteen minutes before steam is again produced.

The cut-out will not protect the element if a part filled unit is tilted during use in a way which enables part of the element to be out of the water for longer than 15-20 seconds.

OTHER USES

Artex®

Normally Artex can be removed using the same method as for wallpaper although the steaming time may be longer.

Vinyl Floor Tiles

Vinyl floor tiles can also be removed if the plate is left long enough for the heat to penetrate the adhesive. Once the adhesive is hot it softens and the tile can be peeled from the floor. Suction cap is to be removed if used for this operation.

TROUBLESHOOTING

My unit fails to boil?

The unit has probably not been left for long enough to cool, please refer to section on safety cut-out. Check the fuse in the plug is sound and is approved to BS1362 and rated at 13 amps. If using an extension lead, check that it is rated at 13 amps and it is fully unwound.

My unit leaks steam from the Pressure Release Valve?

The pressure release valve is a special low pressure valve and it must not be replaced by any other valve. Never block the safety valve. Allow time to cool then clean the rubber washer on the valve and the seat in the neck of the box. Check the hose for kinks. Check the hole inside the steam plate for obstructions. **If the hose is blocked NEVER force the safety valve closed.**

The base of my unit is leaking water?

This is the residue water valve which releases a small amount of water collected by the vacuum on the steam plate when working on the ceiling. This happens to ensure the safe running of the unit. A maximum of 45ml of water will be expelled from this in 78 minutes. Please protect all carpets and flooring with dust sheets during operation.

The steam plate is not sticking to the wall?

Ensure you have switched the vacuum on and inserted the foam vacuum cup and filter into the steam plate as per the instructions on page 5 of this manual.

If you require further assistance please contact our Customer Care Line on:

Tel: 01483 454666

Fax: 01483 454548

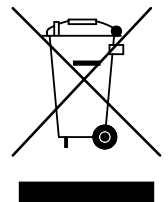
Email: enquiries@earlex.co.uk

Opening hours: Monday-Friday 08.30-17.00 (excluding bank holidays)

Website: www.earlex.com

Information on the disposal of waste electrical & electronic equipment known as WEEE:

Your attention is brought to new directives applicable to the disposal of electrical or electronic equipment, where in accordance with the legislation this product must not be disposed of in your normal household waste. Instead it is your responsibility to dispose of this type of waste by handing it over to special designated collection points for recovery and recycling. This product is marked with a 'wheelie bin' symbol with a cross on it to remind you of this action. The objective of this directive is to help conserve resources and ensure that it is recycled in a manner that protects human health and the environment. For more information about where you can drop off your waste, please contact your local authority. Take back facilities are free of charge.

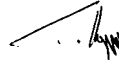


GUARANTEE

This product is guaranteed for a period of 2 years against faulty materials and workmanship. The guarantee specifically excludes the use for hire and rental purposes. Whilst every possible care is taken by Earlex to ensure that our products leave the factory in good working order, Earlex cannot under any circumstances accept liability for problems or damage caused by use of such products not in adherence to the instructions enclosed. Any unit that has been modified in any way or used on incorrect voltage will not be covered by the guarantee. Consumables such as filters are not covered by the guarantee. This guarantee does not affect your statutory rights. In the event of a fault occurring, please contact our helpline before returning the unit to our Service Department at the address below, together with a copy of your purchase receipt. All repairs will be dealt with speedily.

EC Declaration of Conformity

We declare that the unit **SS200** conforms to: 2006/95/EC, EN60335-1, EN60335-2-54, 2004/108/EC, EN55014-1, EN55014-2, EN61000-3-2, EN61000-3-3 & EMF EN 50366.



Tim Hopper - Technical Director

MAINS CONNECTION

This product is supplied with a specially prepared mains lead, if the cord is damaged, it must be replaced by the manufacturer, its service agent or similar qualified persons in order to avoid a hazard.

Please read the following safety instructions before use.

1. If the moulded plug is cut off from the mains lead then the plug must be disposed of safely. **NEVER** under any circumstances insert such a plug into a 13 amp socket.
2. **NEVER** under any circumstances use the appliance or mains lead without the fuse cover fitted. This is the little cover fixed into the base of the plug to hold the fuse in place.
3. If you lose the fuse cover then please contact our helpline on 01483 454666.
4. A replacement fuse must be rated at 13 amp. These must be manufactured and approved to BS1362.
5. **IF IN ANY DOUBT, PLEASE CONTACT AN ELECTRICIAN.**
If you are using an extension lead it must be rated at a minimum of 10 amps and fully unwound. Do not operate with a lead rated at less than 10 amps as this will cause premature failure of the motor which is not covered by the guarantee.

OTHER PRODUCTS IN THE EARLEX RANGE

HVLP (High Volume Low Pressure) Spray Stations The Best Way to Paint

Ideal for spraying all types of jobs from large scale to small detail with equal ease.

- Fast and easy
- Provides a quality finish with no brush marks
- Can spray many types of paint such as varnishes, emulsions, glazes, wood treatments and many more



CombiVac Workshop Vacuum & Blower WD1000

The 1100W motor provides a powerful suction and blowing facility which is ideal for use around the workshop, garage, caravan, car, garden and home.

- 20 litre recovery tank with 12 litres wet capacity/13.5 litres dry capacity and designed for the rough and tumble of everyday use
- On-board storage facilities
- 6 metres working length



Heat Gun Kit HG2000K

A 2000W heat gun in a sturdy and convenient carry case and includes a range of useful accessories.

- Two heat settings at 350°C or 600°C
- Selection of four nozzles, 3 shavehooks and scraper



Steam Cleaning Kit SC165

The UK's number one best selling steam cleaner with a range of steam cleaning accessories.

- 4.5 litre capacity
- Includes carpet cleaning head, window/tile cleaner, jet nozzle with brush and scraper, upholstery cleaner and large steam plate for wallpaper stripping



All Earlex products come with a two year guarantee. For further information on all these products and much more, visit www.earlex.com or call our Helpline on

+44 (0) 1483 454666



Earlex Ltd.

Opus Park, Slyfield Industrial Estate, Moorfield Road, Guildford, Surrey, GU1 1SZ, UK

Tel: +44 (0) 1483 454666 **Fax:** +44 (0) 1483 454548

enquiries@earlex.co.uk