

Earlex®



SC77

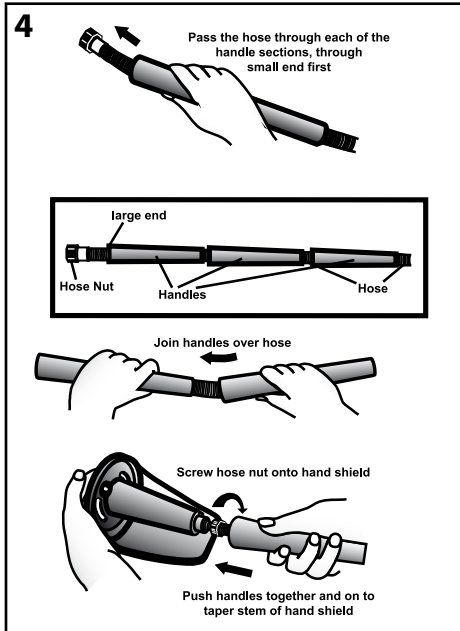
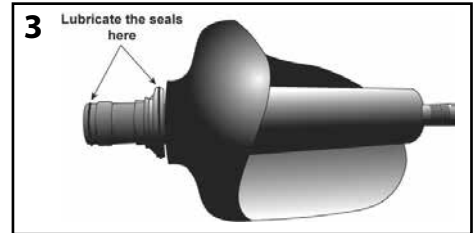
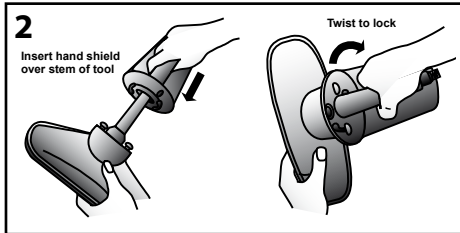
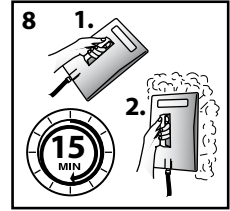
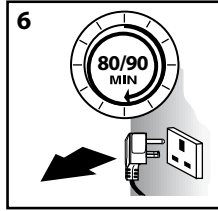
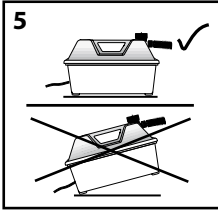
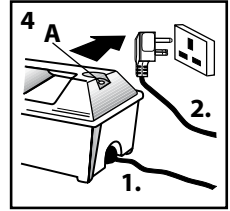
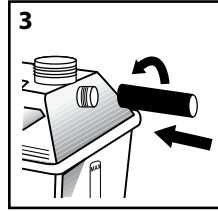
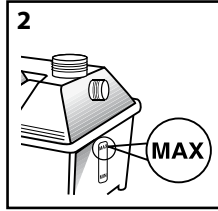
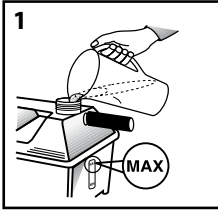


Steam Cleaning Kit

Operating Manual

EN

1



MANY THANKS FOR PLACING YOUR TRUST IN US

The operating instructions are part of the unit. Keep them in a safe place! Read these operating instructions carefully and in full before using the unit.

Scope of delivery

- 1 Boiler
- 2 Steam hose
- 3 Steamplates (A) large/
(B) small(not shown)
- 4 Cordset (not shown)
- 5 Operating manual
- 6 Long handle attachment (3 pcs)
- 7 Upholstery cleaner
- 8 Floor cleaner
- 9 Window/Tile cleaner
- 10 Jet nozzle brush
- 11 Jet nozzle scraper
- 12 Jet nozzle
- 13 Universal handle
- 14 Wallpaper scraper



Intended use




The Steam Cleaning Kit is solely for cleaning with genuine Earlex® special accessories.

To ensure long life of the Steam Cleaning Kit, clean your unit immediately and thoroughly after each use.

CAUTION! - Steam can loosen weak, cracked, porous or poorly bonded plaster. Check a small area before starting work. Do not hold the steamplate in one position too long and stop if plaster starts to break.

PROTECT YOUR HOME- To prevent marks from steam on carpets, work tops, soft furnishings etc. it is recommended the unit be placed on a hard flat board. Ensure the unit will not slip or tilt. Dust sheets and newspapers are not suitable.

Explanation of symbols used

	<p>This symbol indicates a potential danger to you or for the tool. Under this symbol you can find important information on how to avoid injuries and damage to the power tool.</p>
	<p>Beware of steam.</p>
	<p>Indicates tips for use and other particularly useful information.</p>

General Safety Instructions

CAUTION! *Read all the instructions. Non-observance of the instructions below can cause electric shock, fire and/or serious personal injuries.*



- a) **Keep your workplace clean and well lit.** *Disorderly or unlit workplaces may result in accidents.*
- b) **Never use the tool in hazardous areas that contain flammable liquids, gases or dusts.** *Power tools generate sparks that can ignite the dust or vapours.*
- c) **Keep children and other persons away when using the power tool.** *You can lose control of the tool if you are distracted.*
- d) **The tool plug must fit into the socket-outlet. The plug may not be modified in any form. Do not use adaptor plugs together with protective-earthed tools.** *Unmodified plugs and suitable sockets reduce the risk of an electric shock.*
- e) **Avoid physical contact with earthed surfaces such as pipes, heating elements, stoves and refrigerators.** *The risk through electric shock increases if your body is earthed.*

Safety Instructions for Steam Cleaner

Attention! When working with hot steam (min.100°C), there is a risk of serious scalding. Hot steam and boiling water can emit when the safety valve (4 A) is activated due to overpressure in incorrect operation of the unit.



Only change position during use, with care. The steam unit, hose and accessories can be very hot.



Always wear suitable protective clothing / gloves.

Operate the unit only with pure water without agents or additives. Do not switch the unit on when empty.

Never point the steamplate / accessories at people, animals or at objects sensitive to temperature. **Always ensure that the unit is standing securely in a horizontal position (on the floor) (Fig. 5).**

Do not stand on or place objects onto the unit or steam hose. Never over-twist or make kinks in the steam hose, and never block the valve. Only carry the unit by its handle. Never pull on the steam hose or supply cord.

Never submerge the unit in liquid. Every time the accessory is changed for filling / refilling and emptying or when the steam unit is not in use (including work pauses), pull the mains plug out of the socket-outlet. Never overfill the unit. Unplug the mains plug in the event of overfilling or a fault.

Use only EARLEX **original spare parts and accessories!**



Caution! Danger of short-circuits! Cover socket-outlets and switches and do not subject them to steam. When using an extension cable: max.10m long – the cord cross-section must be at least 3 x 1 mm².

Avoid damage! When working in the vicinity of wood / gypsum bases and coated materials these can be impaired by heat or steam. Remedy: Use a heat / steam shield made of cardboard or metal. The unit switches off automatically in case of overheating. After approx.10 minutes, the unit switches itself back on automatically.

The steam time is approximately 80-90 minutes. Never leave a unit unattended if switch is on. Keep the unit away from children and animals. Never let the container steam until it is completely empty.



Before loosening the filler cap always allow the unit to cool down for at least 2 minutes (Fig. 1, 7).

Heated water can leak from the steamplate during the heating-up phase. Hot water can drip during overhead work (Fig. 1, 8).

Safety Symbols

Caution!



Warning! Hot liquid or steam can burn. Danger of scalding. Steam may also condense into boiling droplets. Steam should not be directed towards electrical appliances. Danger of scalding appears on the cap as either symbol.

Beware of steam - before removing the filler cap and refilling unit. When finished, allow to cool completely and empty unit. Always store unit empty.

Using A Wallpaper Stripper

Preparation



Gently score the areas to be stripped using a proprietary perforator tool or the edge of a wall scraper in a criss-cross pattern.

Operation

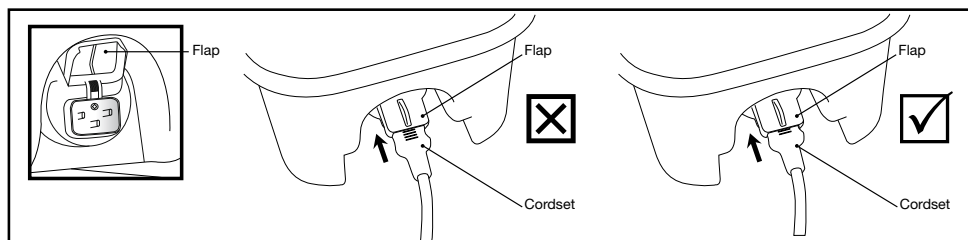
- Remove filler cap and fill unit with clean water to the MAX level line indicator. Replace cap.
- Screw hose onto threaded outlets of boiler and steemplate, hand-tight is sufficient.

Do not overtighten.

- Connect supply cord from unit to power socket-outlet and switch on.



Important When connecting the cordset to the unit, make sure the flap is fully open and does not prevent the plug being fully inserted. Refer to diagram below. If the flap touches the ribs on the cordset it may prevent the cordset inserting fully into the unit.



- It can take up to 15 mins (approx.) before steam is produced - depending on fill water quantity and temperature (Fig. 1, 8).
- Do not leave unattended and keep children and pets out of the room.
- Just before full steam production a small amount of bubbling and water will occur at the steemplate.
- Beware of hot water discharge prior to steam emission.
- Hold the steemplate flat against the wallpaper for approx. 10 seconds - from which the paper should now easily come away using a wallpaper scraper.

Some papers may need more steam than others. Operate steamer until water level is low, then unplug unit and allow to cool for at least 2 minutes.

Assembling the accessories

Attaching the Universal Handle (AC302) (for use with the Floor Cleaner, Upholstery Cleaner, Window / Tile Cleaner and Jet Nozzle).

Align the outline triangle on the handle with the triangle on the accessory.

Push the handle into the accessory and twist so that the solid triangles on the handle and accessory are aligned (Fig. 2).

Lubricate the 'O' ring seals periodically using washing-up liquid or furniture polish (Fig. 3).

The Long Handle Attachment (AC01) (cleaning floors or hard to reach areas).

Pass hose through each of the long handle sections, in at the small end out at the large end.

Screw the hose nut onto the Universal Handle (AC302).

Push the long handle sections together and onto the taper on the Universal Handle (AC302) (Fig. 4). You can use one, two or three sections of the long handle.

Disconnect in reverse order. If you have any difficulty in disconnecting twist the handles apart.

Warning! Hot liquid or steam can burn. Danger of scalding. Steam may also condense into boiling droplets. Steam should not be directed towards electrical appliances. Danger of scalding appears on the cap as either symbol.



Beware of steam - before removing the filler cap and refilling unit. When finished, allow to cool completely and empty unit. Always store unit empty.



Before loosening the filler cap always allow the unit to cool down for at least 2 minutes. Caution! Risk of scalding!

Heated water can leak from the steamplate during the heating-up phase. Hot water can drip during overhead work.

Model	Boiler Capacity	Steam Time
SC77	5L	90 Minutes*

*Approx steam time before the safety cut-out operates.

Descaling



Regular descaling is key to your steamer functioning properly. Depending on water hardness, descale the steam wallpaper stripper after 10 – 15 fills. Units which are defective due to a lack of descaling are excluded from the guarantee!

- Use a standard proprietary descaling agent. Observe the manufacturer's instructions for use!
- Mix the descaling agent with water (ratio 1:1).

- Fill with around 2.5 litres of descaling solution.
- Plug in and switch on for 10 minutes.
- Switch off again and disconnect the mains plug.
- Leave the descaling solution to work for 30 minutes.
- Fully empty.
- Thoroughly rinse the unit two to three times with clear water to remove all descaling solution residue.

Storage

Store emptied, upright and dry.

Technical Data

Power source:	220-240 V ~	Power consumption:	2000W
Steaming time:	90 min.	Hose length:	2 m
Boiler capacity:	5L	Unit weight:	2.9kg
Large Steamplate weight:	160g	Small Steamplate weight:	50 g

Correction of Malfunctions

Malfunction	Cause	Remedy
The steam unit is not working	<ul style="list-style-type: none"> • Heating element covered in limescale • Too little water in tank. A safety cut out is fitted to prevent overheating of element if there is little water in tank • Unit at an angle, heating element is not in water 	<ul style="list-style-type: none"> → Clean → Fill with more water. Wait 2 minutes. Refill will reset the cut-out element → Move unit into horizontal position

Accessories

Further information about the EARLEX range of products for decorative preparation is available on www.earlex.com.

Environmental protection



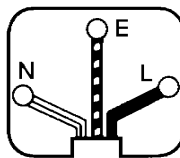
The tool and all accessories and packaging have to be recycled in an environmentally friendly manner. Do not dispose of the tool with household waste. Support environmental protection by taking the tool to a local collection point or obtain information from a specialist retailer. Leftover paint and solvents shall not be emptied into drains, the sewage system or disposed of as household rubbish. It has to be disposed of separately as special waste. Please pay special attention to the instructions on the product packaging.



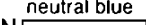
Important Note regarding Product Liability!

In accordance with an EC directive, the manufacturer is liable for his product only if all parts originate from or were approved by the manufacturer and the tools are assembled and operated correctly. The use of other accessories and spare parts can partially or completely invalidate the liability.

WARNING

Your unit has been supplied with a supply cord and a fitted plug. This is identified by the fuse holder in the base of the plug. Please read the following safety instructions before use.



earth
green & yellow
E 
live brown
L 
neutral blue
N 

1. If the fitted plug is cut off from the supply cord then the plug must be disposed of safely. NEVER under any circumstances insert such a plug into a 13 Amp socket-outlet.
2. NEVER under any circumstances use the appliance or supply cord without the fuse cover fitted. This is the little cover fixed into the base of plug to hold the fuse in place.
3. If you lose the fuse cover then please contact any electrical dealer for a replacement or ring our helpline above.
4. A replacement fuse must be rated at 13 Amps and approved to BS1362.
5. IF IN ANY DOUBT PLEASE CONSULT A QUALIFIED ELECTRICIAN.

If you need to fit a plug to the supply cord, this should be fitted in accordance with the wiring instructions below, and will need to be used with a 13 Amp fuse. If in doubt consult a qualified electrician.

WARNING - THIS APPLIANCE MUST BE EARTHED. If you are using an extension lead it must be rated a minimum of 10 Amps and fully unwound. Do not operate with a cord rated less than 10 Amps as this will cause premature failure of the element which is not covered by the guarantee. As the colours of the wires in the supply cord of this appliance may not correspond with the coloured markings identifying the terminals in your plug, proceed as follows:

The wire which is coloured green and yellow must be connected to the terminal in the plug which is marked with the letter E or by the earth symbol, or coloured green.

The wire which is coloured blue must be connected to the terminal which is marked with the letter N or coloured black.

The wire which is coloured brown must be connected to the terminal which is marked with the letter L or coloured red.

2 years guarantee

The guarantee runs for two years, counting from the date of sale (sales slip). It covers and is restricted to free-of-charge rectification of faults which are demonstrably attributable to the use of faulty materials in manufacture, or assembly errors; or free-of-charge replacement of the defective parts. The guarantee does not cover incorrect use or commissioning or fitting or repair work which is not stated in our operating instructions. Wearing parts are also excluded from the guarantee. The guarantee excludes commercial use. We expressly reserve the right to fulfil the guarantee. The guarantee expires if the tool is opened up by persons other than manufacturer service personnel. Transport damage, maintenance work and loss and damage due to faulty maintenance work are not covered by the guarantee. Under any guarantee claim, there must be proof of purchase of the tool through submission of the original receipt. Wherever legally possible, we exclude all liability for injury, damage or consequential loss, especially if the tool has been used for a purpose other than that stated in the operating instructions, commissioned or repaired other than in accordance with our operating instructions or if repairs are performed by someone who is unqualified. We reserve the right to perform any repairs in excess of those stated in our operating instructions. In case of guarantee or repair, please refer to your point of sale. This guarantee does not affect your statutory rights. This guarantee excludes use for hire purposes.

EC Declaration of Conformity

We declare under sole responsibility that this product conforms to the following relevant stipulations:

2006/42/EC; 2004/108/EC; 2011/65/EU; 2002/96/EC; 2006/95/EC

Applied harmonised norms:

EN 60335-1:2012, EN 60335-2-54:2008 + A11:2012, EN 62233;

EN 55014-1:2006 + A1:2009 + A2:2011, EN 55014-2:1997 + Corrigendum 1997 + A1:2001 + A2:2008, EN 61000-3-2:2006 + A1:2009 + A2:2009, EN 61000-3-3:2008



C. Kinge

Product Approvals & Compliance Engineer

Wagner Spraytech (UK) Ltd, Guildford, Surrey, GU1 1SZ

DE

J. Wagner GmbH
Otto-Lilienthal-Str. 18
D-88677 Markdorf
☎ Hotline 0180 5 59 24 637
☎ +49/ (0) 75 44/ 505-1169

B

WSB Finishing Equipment
Veilinglaan 56-58
1861 Meise-Wolvertem

☎ +32/2/2 69 46 75 ☎ +32/2/2 69 78 45

FR

Wagner France S.a.r.l.
12 Avenue des Tropiques
Z.A. de Courtaboeuf
91978 Les Ulis Cedex
☎ 0 825 011 111 ☎ +33 (0) 1 69 81 72 57

DK/S

Wagner Spraytech
Scandinavia A/S
Helgeshøj Allé 28
DK-2630 Tåstrup

☎ +45/43 27 18 18 ☎ +45/43 43 05 28

CH

J. Wagner AG
Industriestraße 22
9450 Altstätten

☎ +41/71/7 57 22 11 ☎ +41/71/7 57 23 23

SK

E-Coreco SK s.r.o.
Kráľovská ulica 8/7133
927 01 Šafa
Slovenská republika
☎ +421948882850 ☎ +421313700077

NL

WSB Finishing Equipment BV
De Heldinnenlaan 200
3543 MB Utrecht

☎ +31/30/2 41 41 55 ☎ +31/30/2 41 17 87

EN

Wagner Spraytech (UK) Ltd
Opus Park
Moorfield Road
Guildford, Surrey, GU11 5Z

☎ 01483 454666 ☎ 01483 454548

CZ

E-Coreco s.r.o.
Na Roudné 102
301 00 Plzeň

☎ +420 734 792 823 ☎ +420 227 077 364

E

Makimport Herramientas, S.L.
C/ Méjico nº 6
Pol. El Descubrimiento
28806 Alcalá de Henares (Madrid)
☎ 902 199 021/ 91 879 72 00 ☎ 91 883 19 59

SLO

Adresa servisa:
GMA Elektromehanika d.o.o.
Cesta Andreja Bitenca 115,
Ljubljana 1000/Slovenija
☎ +386(1)/583 83 04 ☎ +386(1)/518 38 03

H

Magyarországi szerviz
Hondimpex KFT.
Kossuth L. u. 48-50
8060 Mór

☎ +36(-22)/407 321 ☎ +36(-22)/407 852

PL

PUT Wagner Service
ul. E. Imieli 27
41-605 Swietochlowice

☎ +48/32/2 45 06 19 ☎ +48/32/2 41 42 51

HR

Adresa servisa:
EL-ME-HO
Horvatincičev put 2
10436 Rakov Potok/Kroatien

☎/☎ +385(-1)65 86 - 028

AUS

Wagner Spraytech
Australia Pty. Ltd
14-16 Kevlar Close,
Braeside, VIC 3195/Australia

☎ +61/3/95 87 20 00 ☎ +61/3/95 80 91 20

IT

Fhc Srl
Via Stazione 94,
26013 Crema (CR)

☎ 0373 204839 ☎ 00373 204845

www.earlex.com

Part. No. AC309 02/15

© Copyright Wagner Spraytech (UK) Ltd.

Not responsible for errors and changes.