

**Earlex**<sup>®</sup>  
**SPRAYPORT**<sup>®</sup>  
The professional spraying series



**HV6002/ 6003**

**OPERATING INSTRUCTION MANUAL**

Thank you for purchasing the SprayPort from Earlex Professional 6000 Series. This highly versatile HVLP System (high volume of air, low pressure painting) can be used for a wide variety of applications.

**BEFORE USE – PLEASE READ THE MANUAL AND SAFETY INSTRUCTIONS.**

Please retain for future reference.

To register your product visit [www.sprayport.com](http://www.sprayport.com)



# WARNING!

**IMPORTANT: 'WARNING !' alerts user to a specific hazard  
Other points are advisory which should be followed for safe use**

**ALWAYS COMPLY WITH THE SAFETY INSTRUCTIONS SUPPLIED WITH THIS PRODUCT  
AND THE MATERIAL BEING USED**

Only use the unit as described in this manual. Additional product specific warnings may be found throughout the body of this manual where applicable.



## **FIRE AND EXPLOSION HAZARD**

**WARNING!** The substances used with this Spray Gun (paints, coatings, solvents, etc.) may contain dangerous, harmful, explosive or corrosive materials.

**WARNING!** – Use extreme caution when spraying any materials with a flash point lower than 70°F (21°C). Check the technical specifications on the paint or coating container before spraying.

- The Spray Gun must only be used with paints, coatings and solvents that have a flash point suitable for spraying. Consult the paint, coating or solvent manufacturer's instructions and Safety Data Sheets.
- **NEVER** spray near a naked flame including an appliance pilot flame.
- **NEVER** smoke while spraying.
- **DO NOT** operate light switches or run engines or similar spark producing products in the spray area if spraying solvents.
- **DO NOT** use any coatings or material containing any Halogenated Hydrocarbon constituent such as bleach and chlorine.
- Always disconnect unit from power supply when filling the paint or coating container.
- Keep the turbine in a well - ventilated area.
- Keep the turbine as far away from the spray area as the air hose will allow especially when using solvent based coatings.



## **EQUIPMENT MISUSE HAZARD**



**WARNING!** The use of any accessory or attachment, other than those recommended in this instruction manual, may present a risk of personal injury.

**WARNING!** Use the Spray Gun only for the job it was designed for. Misuse of the Spray Gun will invalidate the guarantee.

**WARNING!** If the cordset is damaged, it must be replaced with the correct Earlex part to avoid a hazard.

**WARNING!** To reduce the risk of electric shock do not expose to water. Store indoors.

- **NEVER** under any circumstances aim the Spray Gun at another person or animal. In the event of an injury seek expert medical advice immediately.
- **NEVER** carry the turbine while spraying.
- Always ensure there is adequate ventilation when spraying.
- After each use, thoroughly clean the Spray Gun and grease the Fluid Needle.

	<ul style="list-style-type: none"> <li>• This appliance can be used by persons aged from 14 years and above and persons with reduced physical, sensory or mental capabilities or lack of experience and knowledge if they have been given supervision or instruction concerning use of the appliance in a safe way and understand the hazards involved.</li> <li>• Children shall not play with the appliance.</li> <li>• Cleaning and user maintenance shall not be made by children.</li> <li>• Use only genuine manufacturer replacement parts.</li> <li>• Always disconnect the unit from the power supply before cleaning.</li> </ul>
	<p><b>PERSONAL PROTECTIVE EQUIPMENT WARNING!</b> Noise levels exceed 85dB. Therefore suitable ear protection must be worn.</p> <ul style="list-style-type: none"> <li>• Always wear a suitable protective mask when spraying. The use of gloves, goggles and overalls is also recommended.</li> </ul>
	<p><b>HOT SURFACE!</b></p> <ul style="list-style-type: none"> <li>• <b>CAUTION:</b> Outlet of turbine and air hose may become hot during use. Please allow to cool before removing air hose.</li> </ul>

## Earlex SprayStation Spares and Accessories Store

Earlex stock a large range of spares and accessories. See the range of additional needles for different applications, as well as cleaning kits, paint containers and other accessories at our official online store [store.earlex.co.uk](http://store.earlex.co.uk).

## Register for the 2 Year Guarantee

To benefit from a full 2 year guarantee register your product here [www.earlex.co.uk/registration.html](http://www.earlex.co.uk/registration.html) within 30 days of purchase.

# INTRODUCTION

This powerful spray system applies coatings faster than brushing or rolling whilst maintaining a smooth and accurate finish.

The SprayPort® series is designed for the professional decorator and finisher. The latest technology and materials combine to deliver a consistently high performance.

The SprayPort® series is simple to set up using quick-connect fixings.

The spray gun delivers a high volume of air via the fluid tip for a precise finish.

The powerful steel turbine incorporates open cell air filters for a continuous and clean air flow.

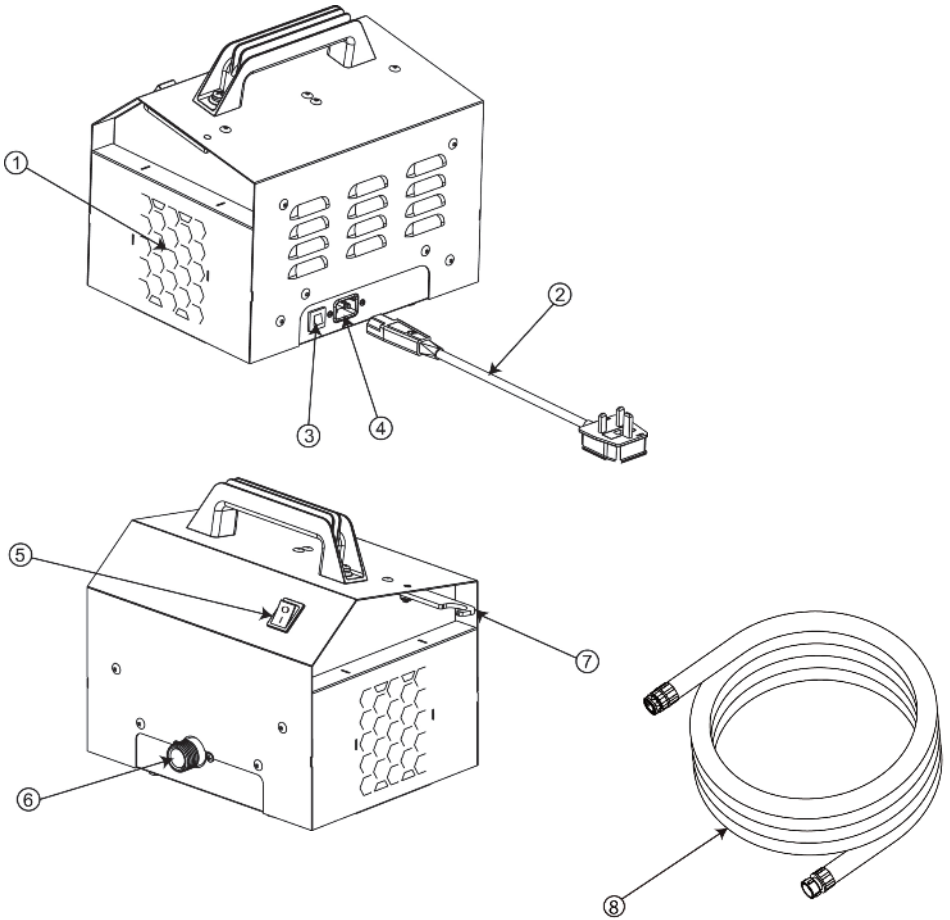
Air is fed to the gun through the lightweight HyperFlex™ hose made from Thermo-Vulcanised Polymer.

The HV6000 series sprays a wide range of paint or coatings with or without dilution.

To achieve the desired results only use good quality paint or coating. Keep in mind that low temperatures make paint or coating thicker. Therefore use of the Spray Gun is not recommended below a minimum temperature of 15°C.

TECHNICAL SPECIFICATION		
MODEL	6002	6003
Turbine	2 stage	3 stage
Motor type	Tangential	Tangential
Voltage	230V	230V
Frequency	50Hz	50Hz
Current	5.0A	5.2A
Air filters	Dual removable filters	Dual removable filters
Pressure rating	psi 4.5 (0.31 bar)	psi 5.5 (0.38 bar)
Air flow	90 CFM (2550 l/min)	90 CFM (2550 l/min)
Air Hose	25ft (7.6m) vulcanised polymer	25ft (7.6m) vulcanised polymer

# SPRAYPORT TURBINE UNIT



## PARTS LIST

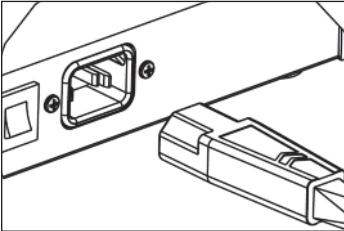
No.	Description	Part No.
1.	Air Filter	PACC62
2.	Cordset	UK: PACC123, EU: PACC124, US: PACC130
3.	Circuit Breaker	n/a
4.	Power Inlet Connector	n/a
5.	Power Switch	n/a
6.	Air Outlet - Hose Attachment	n/a
7.	Gun Dock	PACC82
8.	25ft (7.6m) Air Hose	PACC121

## PREPARATION

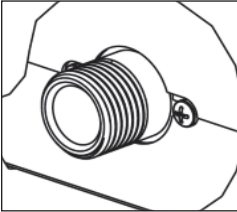
- Unpack turbine and check all parts are present (see parts list) and undamaged.
- Prepare surfaces to be sprayed ensuring they are clean, dry and smooth.
- Ensure there is adequate ventilation.
- Mask off all areas not intended for spraying.

## OPERATION

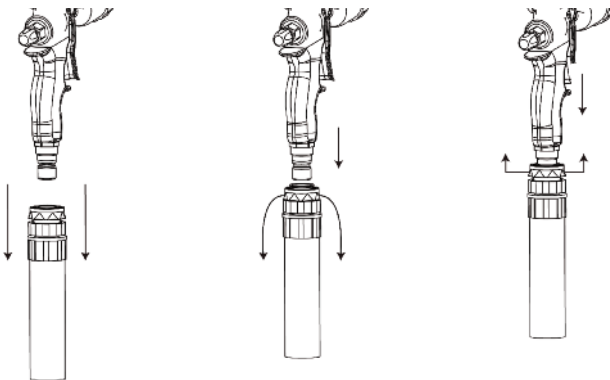
- Prepare the spray gun for operation (refer to Spray Gun Instruction Manual supplied separately).
- Plug cordset into turbine unit.



- Attach the nut at the end of the air hose to the air outlet on the turbine ensuring it is screwed on fully. The connection will be rigid when fitted correctly.



- Join the quick connect hose attachment to the air inlet on the spray gun. Tip: If connection is tight, loosen the quick connect fitting on the hose by unscrewing a little before connecting to the gun, then retighten.



- Connect cordset to a grounded outlet.
- Turn the power on 'I' (5).
- Familiarize yourself with spraying technique (for detailed instruction on how to operate spray gun refer to Spray Gun Operating Instruction Manual supplied separately) using waste cardboard.
- When you are happy with your set-up, commence spraying.

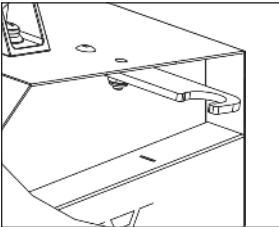
NOTE: Check the turbine unit, filters and the gun are clean and dry before operating.

NEVER leave the turbine unsupervised while plugged in.

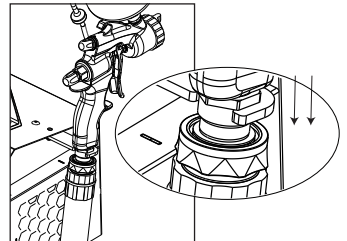
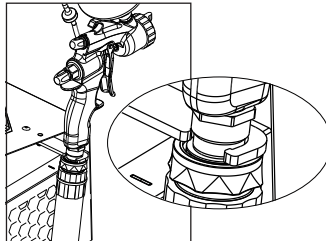
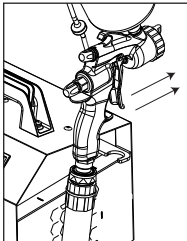
## SHUTTING DOWN

If using your sprayer for less than 1 hour:

- Turn the power off 'O' (5).
- Extend the Gun Dock (7).



- Dock the spray gun in the Gun Dock (7).



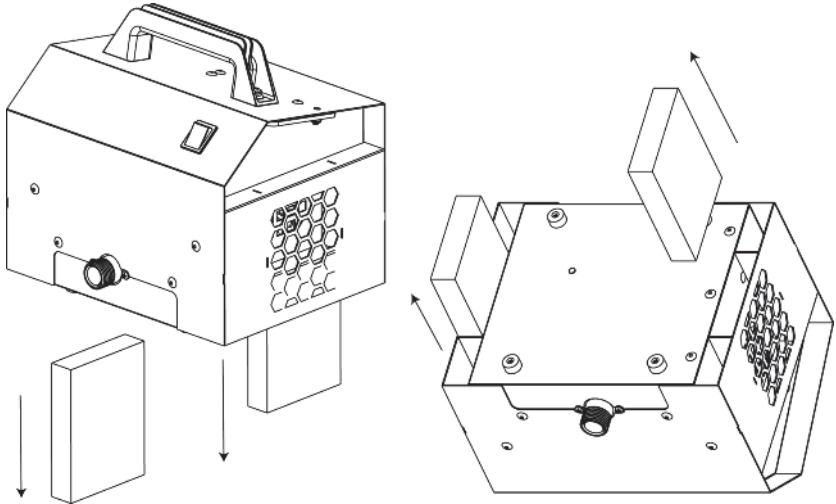
If leaving your sprayer for more than 1 hour:

- Turn the power off 'O' (5).
- Disconnect the air hose from the gun.
- Clean the gun as detailed in the Spray Gun Operating Instruction Manual.
- Allow the turbine unit to cool before disconnecting the air hose.

# MAINTENANCE

Some simple maintenance is required to ensure your SprayPort® continues to perform effectively:  
**IMPORTANT:** Always unplug from the mains ahead of any maintenance.

- Clean/ replace filters.
  - Filters will become soiled during use. To remove see diagram below. Clean filters in warm soapy water.



Check the condition of filter carefully and replace if necessary.

**WARNING!** Ensure filter is completely dry before installing.

- Cleaning the hose:
  - Keep the outer surface of the turbine unit clean by wiping with a damp cloth. Do not submerge into or flush through with water or any chemical. Regularly check for cracks, leaks and holes. Replace if necessary.
- Cleaning the unit:
  - Keep the outer surface of the turbine unit clean by wiping with a damp cloth. Do not submerge into water or any chemical.
- Store the unit indoors. Be careful not to twist or trap the cordset.
- No other user serviceable parts.

## **IMPORTANT:**

It is important to regularly check and clean the filters, hose and turbine, paying particular attention to the air inlets and vents. Failure to do so risks damage to the motor or premature failure.

Servicing and repairs must be carried out by authorized service centres only – contact Earlex Head Office for details.



## TROUBLESHOOTING

PROBLEM	CAUSE	ACTION REQUIRED
Little or no spray	Air inlet blocked	Check the condition of the Air Filter (1) and clean or replace Check air inlets, air vents and air hose for blockages
Turbine has no power	No power at supply	Check the power supply
	Cable fuse has blown	Where applicable check fuse and replace if necessary
	Circuit Breaker (3) has tripped	Reset the Circuit Breaker (3)
	Incorrect or damaged power cord set used	Use correct power cord set. Replace if necessary
	Worn turbine brushes	Replace brushes at an authorized service centre

## MAINS CONNECTION

Your unit has been supplied with a cordset. This is identified by the fuse holder in the base of the plug. Please read the following safety instructions before use.

1. If the cordset is damaged replace with a new cordset to avoid a hazard. Please contact Earlex customer services for a replacement cordset.
2. **NEVER** under any circumstances use the appliance or cordset without the fuse cover fitted. This is the little cover fixed into the base of plug to hold the fuse in place.
3. If you lose the fuse cover then please contact any electrical dealer for a replacement or ring our helpline.
4. A replacement fuse must be rated at 13 Amps. This must be manufactured and approved to BS1362.
5. **IF IN ANY DOUBT PLEASE CONSULT A QUALIFIED ELECTRICIAN.**

**WARNING - THIS APPLIANCE MUST BE EARTHED.** If you are using an extension lead it must be a 3 - core type and rated at a minimum of 13 Amps and fully unwound. Do not operate with a cord rated at less than 13 Amps as this will cause premature failure of the product which is not covered by the guarantee.

### INFORMATION ON THE DISPOSAL OF WASTE ELECTRICAL & ELECTRONIC EQUIPMENT KNOWN AS WEEE

Please do not dispose of tools with your household waste collected by the council. It is your responsibility to dispose of this type of waste by handing it over to a special designated collection point for recovery and recycling.



# NOTES

**PLEASE NOTE:** We have done all we can to ensure that, when used correctly and in accordance with these instructions, the unit has a long and fault-free life. We accept no responsibility for damage caused by the use of incorrect or unsuitable substances, paints or liquids which have not been thinned correctly or which are not suitable for the surfaces to which they are applied, health hazards arising from a lack of ventilation when working in confined spaces or equipment which is faulty due to inadequate cleaning of the components after use. If in doubt, test a small inconspicuous area first. Always read the manufacturer's instructions before use. Neither our guarantee nor the above statement affects your statutory rights.

**Turbine Design Registration**

ECD 002307868-0003

CN 201330262602.0

US applied for

**Spray Gun Design Registration**

ECD 002307868-0001

ECD 002307868-0002

CN 201330263092.9

CN 201330262777.1

US applied for

**EC Declaration of Conformity**

We declare that the units HV6002 & HV6003 conform to:

LVD 2006/95/EC, EN60335-1, EMF EN62233;

EMC 2004/108/EC, EN55014-1, EN55014-2

EN61000-3-2, EN61000-3-3

**All rights reserved © 2014**

**EARLEX WILL ACCEPT NO RESPONSIBILITY FOR THE USE OF THIS PRODUCT IF USED FOR ANY PURPOSES OTHER THAN THOSE DETAILED HEREIN.**

**24 Month Guarantee**

Earlex automatically issues a 1 year guarantee on your new Earlex product. To upgrade to a 2 year guarantee for free, please register here [www.earlex.co.uk/registration.html](http://www.earlex.co.uk/registration.html) within 30 days of purchase.

The guarantee is effective from the date of purchase against defects in materials or workmanship. This guarantee does not cover abuse, accidental damage, misuse, normal wear parts, motor brush replacement or spray gun maintenance & clean up. The guarantee is void if repairs are made or attempted by unauthorised persons. At our option, Earlex will repair or replace defective parts without charge provided the purchaser return products prepaid to the nearest authorised service centre or to the factory. Factory returns must first receive a Return Material Authorisation.

Please call +44 (0) 1483 454 666

In other countries please call the company where you originally purchased the product. Earlex will not be held liable if equipment is not used solely for the purpose it was designed. Guarantee will become void through improper installation or operation. Any modifications to the equipment or deviations from the recommended procedures, accidental damage or any related action that impairs or abuses intended use and care of Earlex equipment will also void guarantee and liability. In the event of rentals, this guarantee period is restricted to 6 months.



Made in England

© Earlex Ltd. Guildford GU1 1SZ

Helpline telephone no: +44 1483 454666

[www.earlex.com](http://www.earlex.com)