

Earlex[®]
WDS30P
**30 Litre Wet & Dry Vacuum
Cleaner with Synchronised
Power Outlet**



**PLEASE READ THESE INSTRUCTIONS CAREFULLY
BEFORE USE & RETAIN FOR FUTURE REFERENCE.**

Read and retain all these instructions before operating this product.

WARNING: Failure to do so could result in injury or
invalidate your guarantee.

Earlex Ltd. will accept no responsibility for the use of this product if used for
any other purposes than those detailed herein.

CONTENTS

2. Introduction
 - Safety Information
3. What Is Included
 - Unpacking & Set Up
4. Operation
5. Emptying The Tank
 - Important Information
6. Blower Function
 - Storage
 - Maintenance
7. Guarantee
 - Spare Parts
 - Disposal of Power Tools
 - Troubleshooting

INTRODUCTION

Thank you for purchasing your Earlex Wet & Dry Vacuum & Blower System. This product can be used all around the home, garage, workshop and garden.

Dry Mode – picks up all kinds of dry material such as dust, nails, broken glass, leaves, litter and wood shavings.

Wet Mode – picks up various types of liquid spills and can help to unblock sinks.

Blow Mode – collects leaves into piles and dusts out garages/workshops.

Due to the heavy duty nature of a wet & dry vacuum cleaner the motor may sound louder than your normal cleaner. In order to be able to pick up liquids, a special by-pass motor is fitted so that the liquid can be deposited into the recovery tank without going through the motor.

SAFETY INFORMATION

CAUTION – NEVER OPERATE THIS CLEANER WITHOUT THE CORRECT FILTER FITTED.

Failure to do so will invalidate the guarantee. A clean filter is essential for this cleaner to operate efficiently. If the filter becomes clogged or damaged or fails to operate you must fit a Wickes replacement. Details are supplied with the cleaner.

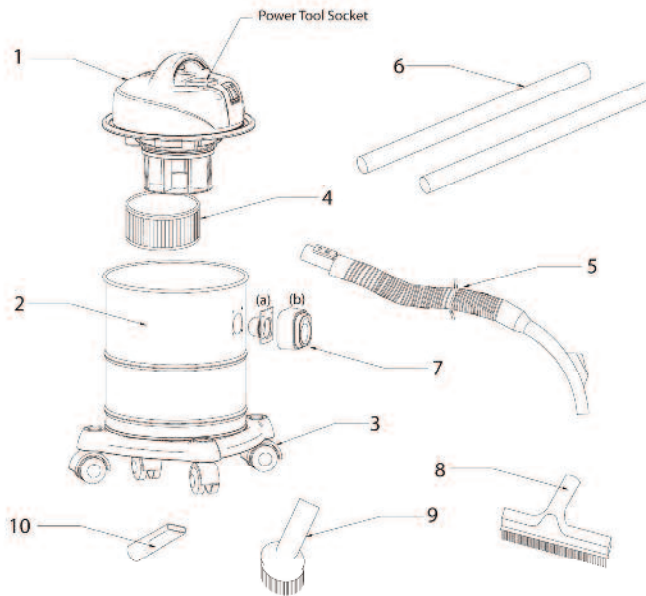
- o Ensure the vacuum is kept upright during use to prevent water entering the motor and causing damage.
- o To avoid electric shock, do not expose to rain. Store indoors.
- o Never pick up inflammable or combustible liquids such as petrol or other volatile substances.
- o Never use in the presence of explosive liquids, vapours or explosive dust such as coal or grain.
- o Never pick up asbestos or asbestos dust.
- o Never modify the cleaner in any way – this is dangerous and will invalidate the guarantee.
- o If motor sound becomes higher pitched always check for the following and then empty immediately.
 - o Blocked hose or accessory.
 - o Blocked filter.
 - o Full container.
- o Never try to move the cleaner by pulling by the mains lead. Always use the carry handle.
- o Always check that the filter is clear and not blocked. Keep all openings clear of any blockages.
- o When lifting the unit, always hold with both hands and carry by the handle. Beware of excess weight.
- o Always switch the unit off before changing between vacuum and blower functions.

- o Ensure cleaner is not exposed to strong sunlight or high temperatures.
- o This appliance is not intended for use by persons (including children) with reduced physical, sensory or mental capabilities, or lack of experience and knowledge, unless they have been given supervision or instruction concerning use of the appliance by a person responsible for their safety.
- o Only use the product as detailed in these instructions.
- o Use only manufacturers recommended attachments and consumables.

WHAT IS INCLUDED

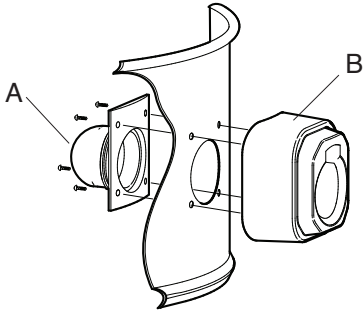
The following components are included in the kit (as illustrated below).

- | | |
|-------------------------|--------------------|
| 1. Motor Housing | 6. Extension Tubes |
| 2. Waste Collection Bin | 7. Inlet Stub |
| 3. Castors | 8. Floor Tool |
| 4. Cartridge Filter | 9. Dust Brush |
| 5. Hose | 10. Crevice Tool |



UNPACKING & SET UP

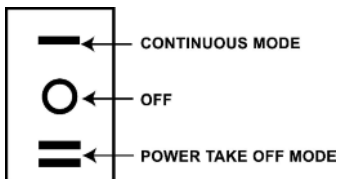
1. Remove all packaging materials and accessories and lift unit out of box.
2. Unclip the motor housing and remove from waste collection bin.
3. Remove hose, castors and accessories from inside the collection bin.
4. Fix castors into the four corners of the base of the unit by pushing them into position.
5. Attach inlet stub into waste collection bin by aligning (a) and (b) either side of the bin, as pictured, using the four screws supplied. You will need a Philips PH2 driver to secure the inlet stub to the bin.



6. Ensure that the filter is securely fitted onto the float cage.
7. Place motor housing back on top of the collection bin and secure with the side clips.
8. Clip hose into the outside of the inlet stub, making sure it is secure.
To remove the hose, push down the button and pull firmly away from the unit.
9. To use the blower function, clip the hose into the top of the cleaner in the same way.
10. Attach the desired accessory to the end of the hose.

OPERATION (INCLUDING POWER TAKE-OFF MODE)

1. Unwind the mains lead fully.
2. Connect the appliance to the mains or extension lead.
3. The unit has two operating modes – continuous and power take-off mode. With the switch set in position I (continuous mode) the vacuum motor will operate when the switch is on.
4. With the switch in position II (power take-off mode) the operation of the vacuum motor is controlled by the power tool, plugged into the socket on the unit. When the power tool is switched on there is a delay of approx. 5 seconds before the vacuum motor switches on. When the power tool is switched off there is a delay of approx. 7 seconds before the vacuum motor switches off.



5. Operate as required in either mode, dependant on the task.
6. You can adjust the air flow by sliding the air flow adjustor forward for maximum suction, covering the hole, or backwards, opening the hole, to reduce the suction.

Beware of discharged air from the outlet on the motor housing.

EMPTYING THE TANK

WARNING – TAKE CARE, THE TANK MAY BE HEAVIER THAN YOU THINK.

1. When the tank becomes full the cleaner will make a high pitched noise and the float shut-off will activate, causing the cleaner to lose suction.
2. Switch off the unit and unplug from socket.
3. Unclip the motor housing from the waste collection bin.
4. Empty collection bin of all contents, making sure you are protected against any sharp objects. Beware of excess weight.
5. Clean filters, change if necessary. To remove the filter, apply pressure to the top edge on either side of the filter and pull downwards, twisting as you pull the filter off the float cage. When replacing the filter, push onto the float cage, twisting the filter to ensure it is secure. Ensure that the filter is pushed to the top of the float cage and that the filter pleats are not squashed.
6. Check and clean any blockages within the unit.
7. Replace motor housing and clip onto bin, plug in and continue as before.

FLOAT SHUT-OFF

The cleaner is protected by an automatic shut-off float valve when the recovery tank becomes full of liquid. This will become apparent to you as the motor will start to make a higher pitched noise. If this happens:

1. Switch the cleaner off.
2. Disconnect from the mains.
3. Lift the hose up to drain any liquid back into the container.
4. Empty the contents of the tank.
5. Try to keep the hose raised whilst emptying out the liquid, this will help eliminate any spills.

WARNING: BE CAREFUL WHEN EMPTYING THE TANK, IT MAY BE HEAVIER THAN YOU THINK.

IMPORTANT INFORMATION

The float valve is a safety device, do not attempt to remove this or modify it, it is there for your safety.

Should the cleaner overturn during use, switch the unit off immediately, return to the upright position.

If collecting soapy water you will need to regularly check whether the unit requires emptying as the lather can bypass the float system and there can be a discharge of foam. Should this occur:

1. Switch off the unit.
2. Wash out any foam in the filter.
3. Tip away any water around the outlet on the motor housing before restarting.

BLOWER FUNCTION

The cleaner can be used as a powerful blower:

1. Ensure that the hose, tank and accessories have been cleaned of any debris before operating the blower function.
2. Protect your eyes with safety goggles when using this function and ensure that no one else is in close proximity.
3. Insert the hose into the outlet on the top of the motor housing.
4. Uses include blowing leaves into piles and blowing dust out of difficult areas,

Always switch the unit off before changing between vacuum and blower functions.

STORAGE

1. Clean out the container and wipe the surface of the unit over with a damp cloth.
2. Wrap the mains lead around the upper moulding.
3. Locate the two extension tubes, the crevice tool and the brush tool into the slots above the castors.
4. Store the hose and floor tool inside the collection bin.

MAINTENANCE

After using the cleaner in wet mode, empty, rinse and dry the recovery tank, hose and accessories. If it has been used for sticky liquid spills, clean the tank and accessories with warm, soapy water.

Do **NOT** oil the motor. It is lubricated for the life of the product.

There are no serviceable parts inside the cleaner apart from the filters.

**IF YOU REQUIRE FURTHER ASSISTANCE THEN PLEASE
CONTACT OUR HELPLINE ON
01483 454666 (Monday – Friday 08:30 – 17:00 excluding
Bank holidays)
or email enquiries@earlex.co.uk**

GUARANTEE

This product is guaranteed for a period of one year against faulty materials and workmanship. The guarantee specifically excludes the use for hire and rental purposes. Whilst every possible care is taken by Earlex to ensure that our products leave the factory in good working order, Earlex cannot under any circumstances accept liability for problems or damage caused by their subsequent use. Any unit that has been modified in any way or used on incorrect voltage will not be covered by the guarantee. This guarantee does not affect your statutory rights. In the event of a fault occurring please contact our helpline on 01483 454666. All repairs will be dealt with speedily.

SPARE PARTS LIST

SPARE PARTS	PART CODE
Cartridge Filter	WDACC20
Crevice Tool	WD0036
Dust Brush	WD0343
Extension Tube	WD0342
Floor Tool	WDACC2
Hose	WD0341

To order any spare parts for your wet & dry vacuum, please contact the helpline on 01483 454666 (Monday – Friday 08.30-17.00 excluding bank holidays)

DISPOSAL OF POWER TOOLS

Information on the disposal of waste electrical equipment known as WEEE:

Your attention is brought to new directives applicable to the disposal of this electrical equipment, where in accordance with the legislation this product must not be disposed of in your normal household waste. Instead it is your responsibility to dispose of this type of waste by handing it over to special designated collection points for recovery and recycling. This product is marked with a 'wheelie bin' symbol with a cross on it to remind you of this action. The objective of this directive is to help conserve resources and ensure that it is recycled in a manner that protects human health and the environment. For more information about where you can drop off your waste, please contact your local authority. Take back facilities are free of charge.



TROUBLESHOOTING

DO NOT:

- o Use power tools rated at more than 1600W in the power take-off socket.
- o Leave appliance unattended when plugged in. Unplug from outlet when not in use and before servicing and cleaning.
- o Pick up anything that is burning or smouldering such as cigarette ends, hot coals, matches or similar.
- o Allow the cleaner to be used by children.
- o Use cleaner without the filter in place.
- o Vacuum boat bilges since flammable liquids or fumes may be present.
- o Pull the cleaner along by the hose.

The unit does not turn on?

Check the unit is plugged in and switch on. Check the fuse in plug and only replace with a fuse of the same rating – 13 amps. If using an extension lead, please check the fuse in this lead.

IMPORTANT: It is recommended that the power cable and/or extension cable are fully unwound before a connection is made to the power supply. However, ensure the residual cable does not pose a trip hazard.

The motor operates but cleaner fails to pick up?

Check if the cleaner requires emptying.
Check and clear any blockages within the system.
Check that filters are clean and not damaged.

The motor makes a high pitched noise?

Check if the cleaner needs emptying and the float valve has operated.

MAINS CONNECTION

This product is supplied with a specially prepared mains lead, if the cord is damaged, it must be replaced by the manufacturer, its service agent or similar qualified persons in order to avoid a hazard.

NOTE: When used outside, the cleaner must be connected to an RCD protected electrical supply to conform to BS7671:1992.

Please read the following safety instructions before use.

1. If the moulded plug is cut off from the mains lead then the plug must be disposed of safely. NEVER under any circumstances insert such a plug into a 13 amp socket.
2. NEVER under any circumstances use the appliance or mains lead without the fuse cover fitted. This is the little cover fixed into the base of the plug to hold the fuse in place.
3. If you lose the fuse cover then please contact our helpline on 01483 454666.
4. A replacement fuse must be rated at 13 amp. These must be manufactured and approved to BS1362.

IF IN ANY DOUBT PLEASE CONSULT AN ELECTRICIAN.

EC DECLARATION OF CONFORMITY

We declare that the unit WDS30P conforms to: 2006/95/EC,
EN60335-1 & 2-2-1995 & 2004/108/EC, EN55014.



Tim Hopper - Technical Director

Earlex Limited, Opus Park, Slyfield Industrial Estate
Moorfield Road, Guildford, Surrey, GU1 1SZ
www.earlex.co.uk