

STEAM CLEANING KIT CONTENTS

Please note: Not all of the accessories shown in this instruction booklet are included in every steam cleaning kit. To check the contents of your steam cleaning kit, please refer to the colour packaging (where supplied), catalogue or store where the unit was purchased. If you are unsure about the contents of your steam cleaning kit, please contact our helpline on 01483 454666.



Component List

Steam Boiler (not shown)	
SC75	D87
SC125	B44
SC165	ST118
Mains Lead with Plug 3m (not shown)	B17
Mains Lead with Plug 2m (not shown)	C3P
a Floor Cleaner	AC254
b Towel for Floor Cleaner	AC275
c Window/Tile Cleaner	AC258
d Jet Nozzle	AC262
e Scraper for Jet Nozzle	AC21
f Brush for Jet Nozzle	AC25
g Universal Handle	AC302
h 3 lengths of Handle	AC01
i 3.6m Steam Hose	ST94
3.6m Steam Hose (SC75)(not shown)	D14

OPTIONAL ACCESSORIES

(Not included in all kits)

j Large Plate for wallpaper stripping	D39
k Small Steam Plate	ST165
l Upholstery Cleaner	AC250
m Towel for Upholstery Cleaner	AC276
Sink Unblocker Tube (not shown)	NRL/.5
Castors (SC165 optional) (not shown)	F17

ASSEMBLING THE ACCESSORIES

The Universal Handle (AC302) is used in conjunction with the Floor Cleaner, Upholstery Cleaner, Window / Tile Cleaner and Jet Nozzle. Align the outline triangle on the handle with the triangle on the accessory. Push the handle into the accessory and twist so that the solid triangles on the handle and accessory are aligned (see Diagram 1).

Over time, you may find that your steam cleaning accessories become awkward to assemble to the universal handle. This is due to the steam reducing the lubrication properties of the 'O' ring seals. In this event, simply lubricate the 'O' ring seals as illustrated (Diagram 2) using washing-up liquid or furniture polish.

The Long Handle Attachment (AC01) is designed to be used when cleaning floors or hard to reach areas. To assemble, pass hose through each of the long handle sections, in at the small end out at the large end. Screw the hose nut onto the universal handle and push the long handle sections together and onto the taper on the universal handle (see Diagram 3). You can use one, two or three sections of the long handle. Disconnect in reverse order. If you have any difficulty in disconnecting twist the handles apart.

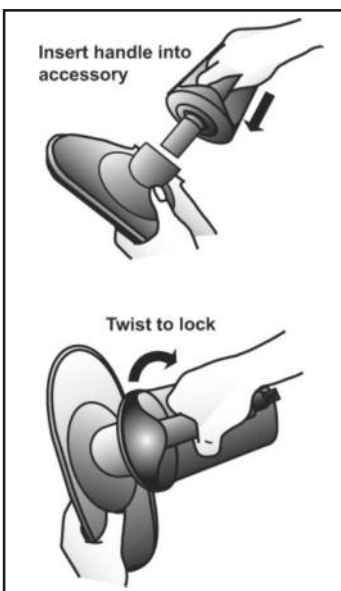


Diagram 1 Assembling Handle

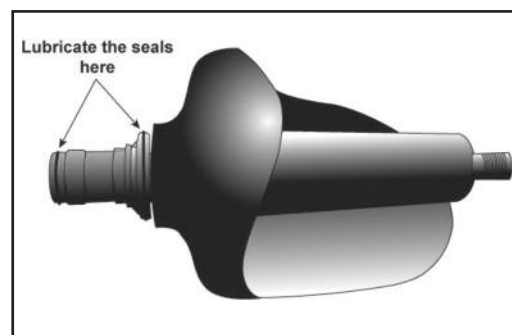


Diagram 2 Seal Lubrication

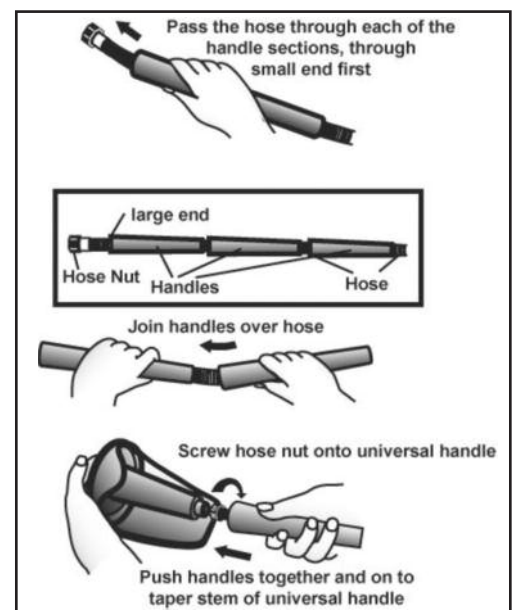


Diagram 3 Fitting Long Handle Attachment